

## CS Series – Heavy Duty Cam Switches

### Key features of the CS Series include:

- Wide variety of heavy-duty oiltight cam switches
- Operators available up to 12 positions
- Switches made with a double circuit contact block
- Contact blocks rated 600V, 10A
- Ideal for ammeter/voltmeter applications
- Built to order — not available in subcomponents
- UL listed and CSA certified
- NEMA Type 4, 13



UL Listed  
File No. E68961



CSA Certified  
File No. LR48366

### Contact Ratings

| Rated Thermal Current  |                      | 10A   |                      |           |            |
|------------------------|----------------------|---|----------------------|-----------|------------|
| <b>AC</b>              | <b>Break Current</b> | 120V/5A   | 240V/3A              | 480V/2A   | 600V/1A    |
| <b>DC</b>              | <b>Resistive</b>     | <b>Break Current</b>                            | 24V/8A               | 110V/8A   | 220V/1A    |
|                        |                      | <b>Break Current</b>                            | 24V/5A               | 110V/1.2A | 220V/0.45A |
|                        | <b>Inductive</b>     | <b>Make Current (A)</b>                         | Rated amperage x 1.1 |           |            |
| <b>Electrical Life</b> |                      | 500,000 operations minimum (at full rated load) |                      |           |            |
| <b>Mechanical Life</b> |                      | 5,000,000 (at no load)                          |                      |           |            |

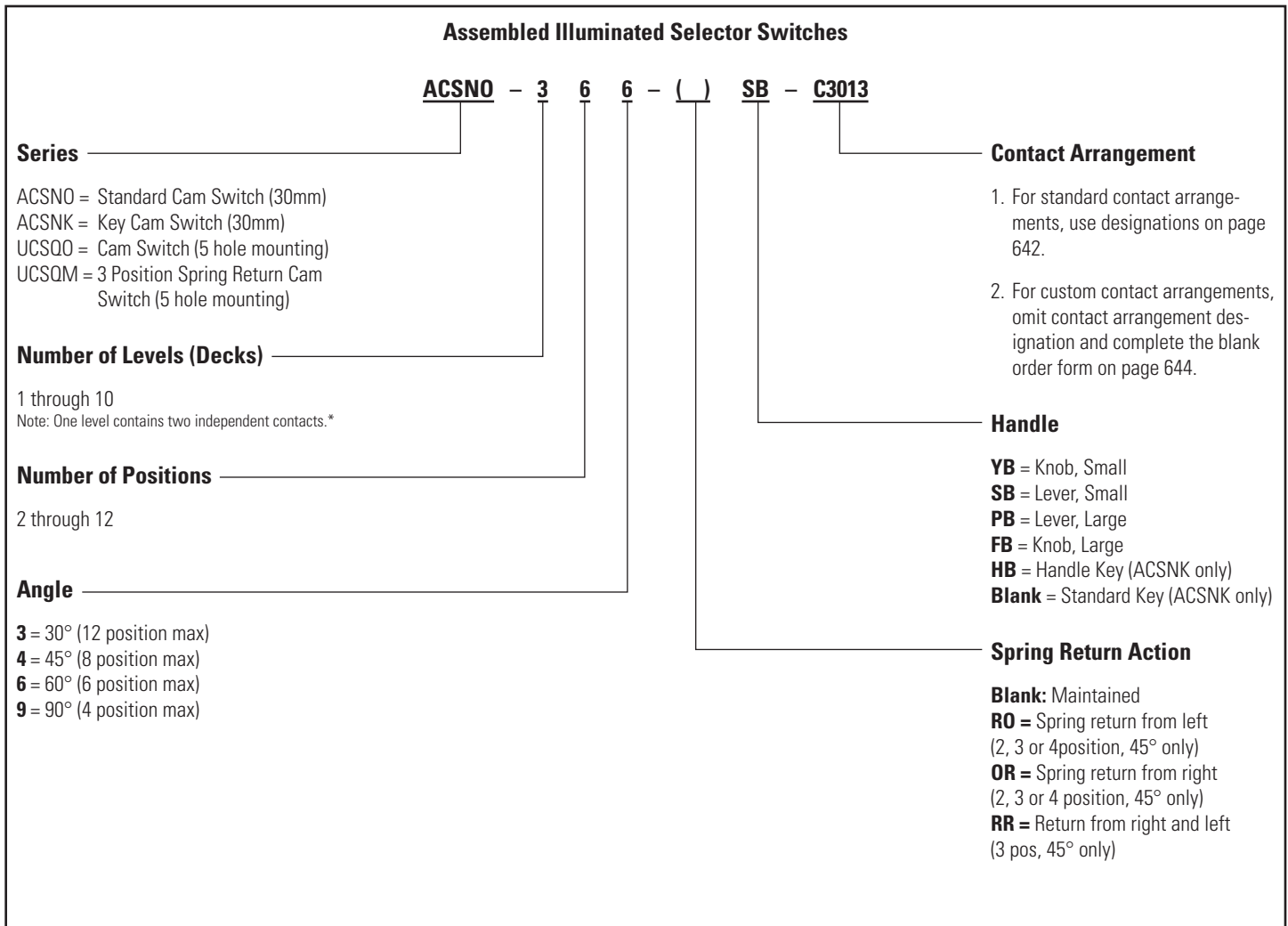
### CS Series

| Series | Appearance | Operator             |          | Maximum Contacts To Be Mounted      | Handle Styles      |
|--------|------------|----------------------|----------|-------------------------------------|--------------------|
|        |            | Cam Angle            | Position |                                     |                    |
| ACSNO  |            | 30°                  | Up to 12 | 1 to 10 decks;<br>Up to 20 contacts | YB, SB, PB, FB     |
|        |            | 45°                  | Up to 8  |                                     |                    |
|        |            | 60°                  | Up to 6  |                                     |                    |
|        |            | 90°                  | Up to 4  |                                     |                    |
| ACSNK  |            | 30°                  | Up to 12 | 1 to 10 decks;<br>Up to 20 contacts | HB or standard key |
|        |            | 45°                  | Up to 8  |                                     |                    |
|        |            | 60°                  | Up to 6  |                                     |                    |
|        |            | 90°                  | Up to 4  |                                     |                    |
| UCSQO  |            | 30°                  | Up to 12 | 1 to 10 decks;<br>Up to 20 contacts | YB, SB, PB, FB     |
|        |            | 45°                  | Up to 8  |                                     |                    |
|        |            | 60°                  | Up to 6  |                                     |                    |
|        |            | 90°                  | Up to 4  |                                     |                    |
| UCSQM  |            | 45°<br>Spring return | Only 3   | 1 to 3 decks;<br>Up to 6 contacts   | YB, SB, PB, FB     |



1. Do not use spring return (SR) for more than six contacts.
2. Two identical keys come with ACSNK unit. Specify "H" for handle key option.
3. For handle styles, see page 645.

Illuminated Selector Switches (Assembled)



1. \*Contact blocks may contain two independent contacts, (a four position switch with four independent contacts only requires two contact blocks).  
 2. \*Caution: switches with 180° or more of rotation may require separate blocks for each contact due to cam overlapping.  
 3. Key retainable in every 45° position (45, 90, 180, 225, 270, 315, 360).

Switches & Pilot Lights

Display Lights

Relays & Sockets

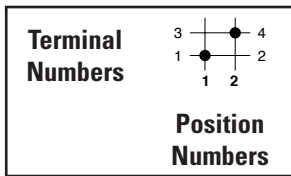
Timers

Terminal Blocks

Circuit Breakers

**Contact Arrangements**

**Standard Arrangements**



**C-1001**



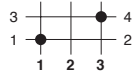
**C-1002**



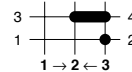
**C-1014**



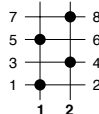
**C-1005**



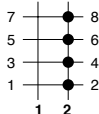
**C-1008**



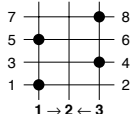
**C-2001**



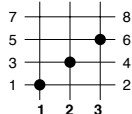
**C-2002**



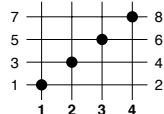
**C-2006**



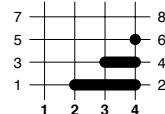
**C-2004**



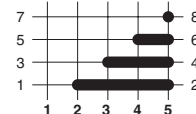
**C-2008**



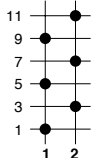
**C-2009**



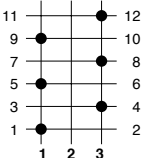
**C-2027**



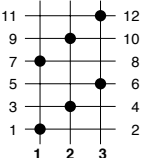
**C-3001**



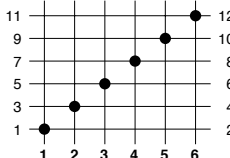
**C-3002**



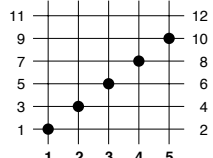
**C-3005**



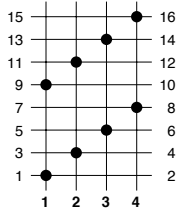
**C-3013**



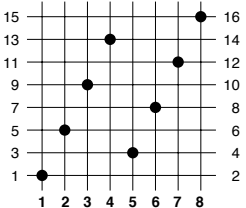
**C-3016**



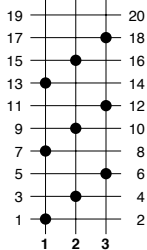
**C-4001**



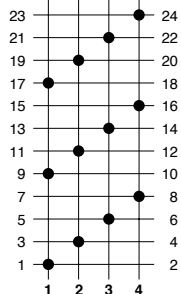
**C-4002**



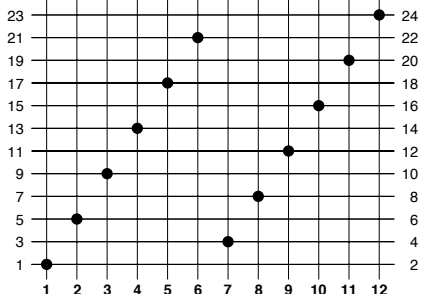
**C-5001**



**C-6001**



**C-6002**



Switches & Pilot Lights

Display Lights

Relays & Sockets

Timers

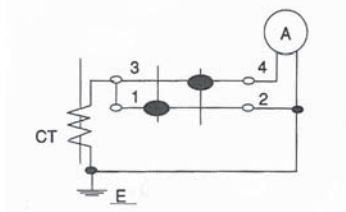
Terminal Blocks

Circuit Breakers

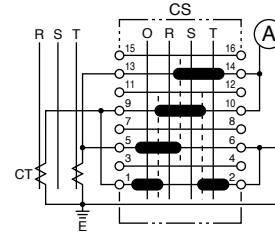
Contact Arrangements continued

Ammeter Switching

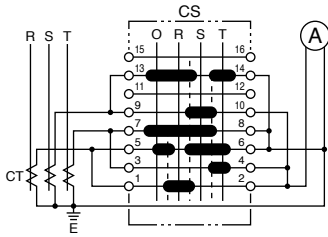
C-1012



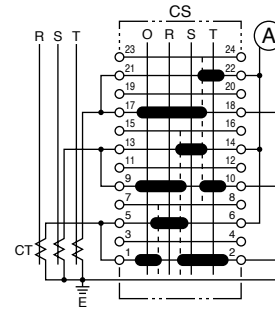
C-4007



C-4003

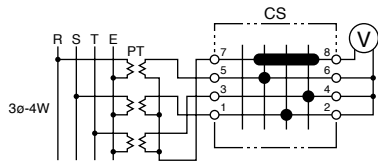


C-6003

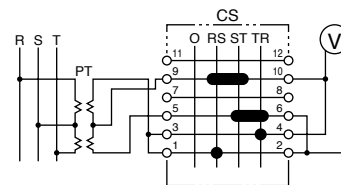


Voltmeter Switching

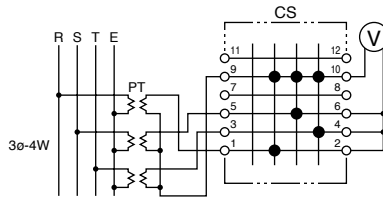
C-2022



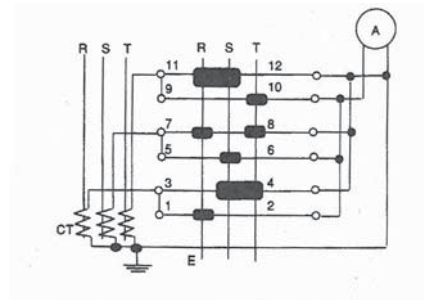
C-3008



C-3009



C-3007



Switches & Pilot Lights

Display Lights

Relays & Sockets

Timers

Terminal Blocks

Circuit Breakers

**Order Form (Custom Contact Arrangement)**



**Series**

- ACSNO
- ACS NK
- UCSQO
- UCSQM

**\*Number of Decks**  
Specify Qty = 1, 2, 3, 4,  
5, 6, 7, 8, 9, or 10

\*Note: One Deck can drive two independent contacts.

**Number of Positions**

| Unit                      | Angle              | Positions     |
|---------------------------|--------------------|---------------|
| ACSNO<br>ACS NK*<br>UCSQO | 30° only           | 9, 10, 11, 12 |
|                           | 30° or 45° only    | 7 or 8        |
|                           | 30°, 45° or 60°    | 5 or 6        |
| UCSQM                     | 30°, 45°, 60°, 90° | 2, 3, or 4    |
|                           | 45° only           | 3 only        |

\* ACSNK keys only remove at 45°.

**Handle**

**ACSNO, UCSQO, UCSQM:**

- YB** = Knob, Small
- SB** = Lever, Small
- PB** = Lever, Large
- FB** = Knob, Large

**ACS NK:**

- HB** = Handle Key (option)
- Blank** = Standard Key

For handle styles, see page 645.

**Spring Return**

- Blank = Maintained
- RO** = Spring return from left (3 or 4 position, 45°)
- OR** = Spring return from right (3 or 4 position, 45°)
- RR** = Return from right and left (3 position, 45°)

**Angle**

- 3** = 30°
- 4** = 45°
- 6** = 60°
- 9** = 90°

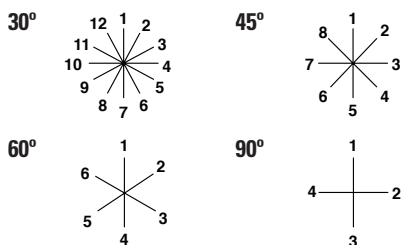
**UCSQM is available in spring-return version only.**

**Contact Arrangement Table**

| Cams    | Terminal Numbers | Position |   |   |   |   |   |   |   |   |    |    |    |
|---------|------------------|----------|---|---|---|---|---|---|---|---|----|----|----|
|         |                  | 1        | 2 | 3 | 4 | 5 | 6 | 7 | 8 | 9 | 10 | 11 | 12 |
| Deck 1  | 1 and 2          |          |   |   |   |   |   |   |   |   |    |    |    |
|         | 3 and 4          |          |   |   |   |   |   |   |   |   |    |    |    |
| Deck 2  | 5 and 6          |          |   |   |   |   |   |   |   |   |    |    |    |
|         | 7 and 8          |          |   |   |   |   |   |   |   |   |    |    |    |
| Deck 3  | 9 and 10         |          |   |   |   |   |   |   |   |   |    |    |    |
|         | 11 and 12        |          |   |   |   |   |   |   |   |   |    |    |    |
| Deck 4  | 13 and 14        |          |   |   |   |   |   |   |   |   |    |    |    |
|         | 15 and 16        |          |   |   |   |   |   |   |   |   |    |    |    |
| Deck 5  | 17 and 18        |          |   |   |   |   |   |   |   |   |    |    |    |
|         | 19 and 20        |          |   |   |   |   |   |   |   |   |    |    |    |
| Deck 6  | 21 and 22        |          |   |   |   |   |   |   |   |   |    |    |    |
|         | 23 and 24        |          |   |   |   |   |   |   |   |   |    |    |    |
| Deck 7  | 25 and 26        |          |   |   |   |   |   |   |   |   |    |    |    |
|         | 27 and 28        |          |   |   |   |   |   |   |   |   |    |    |    |
| Deck 8  | 29 and 30        |          |   |   |   |   |   |   |   |   |    |    |    |
|         | 31 and 32        |          |   |   |   |   |   |   |   |   |    |    |    |
| Deck 9  | 33 and 34        |          |   |   |   |   |   |   |   |   |    |    |    |
|         | 35 and 36        |          |   |   |   |   |   |   |   |   |    |    |    |
| Deck 10 | 37 and 38        |          |   |   |   |   |   |   |   |   |    |    |    |
|         | 39 and 40        |          |   |   |   |   |   |   |   |   |    |    |    |

To specify non-standard arrangements (designation not on preceding pages), fill in this table using the following symbols.  
**X** = Closed contact (break before make) **O** = Open contact **X-X** = Overlapping contact (remain on when switch is moved between two positions)

**Specifying Nameplate (Optional)**



**Specifying Legends**

Position

- 1 \_\_\_\_\_
- 2 \_\_\_\_\_
- 3 \_\_\_\_\_
- 4 \_\_\_\_\_
- 5 \_\_\_\_\_
- 6 \_\_\_\_\_



If no engraving information is provided, a blank nameplate will be supplied.

- 1 \_\_\_\_\_
- 2 \_\_\_\_\_
- 3 \_\_\_\_\_
- 4 \_\_\_\_\_
- 5 \_\_\_\_\_
- 6 \_\_\_\_\_

Switches & Pilot Lights

Display Lights

Relays & Sockets

Timers

Terminal Blocks

Circuit Breakers

Accessories — CS Series

Replacement Handles

|                          |                     |                 |                 |                  |                 |
|--------------------------|---------------------|-----------------|-----------------|------------------|-----------------|
|                          |                     |                 |                 |                  |                 |
| <b>Part Number</b>       | CSH-YB              | CSH-SB          | CSH-PB          | CSH-FB           | CSH-H2B         |
| <b>Dimensions</b>        | 0.79"D x 1.61"H     | 0.79"D x 1.97"H | 1.58"D x 1.97"H | 1.58"D x Ø 1.97" | 0.95"D x 2.28"H |
| <b>Applicable Models</b> | ACSNO, UCSQO, UCSQM |                 |                 |                  | ACSNK           |

Replacement Nameplates

|   |                    |       |              |
|---|--------------------|-------|--------------|
| <b>Size &amp; Shape</b><br>□ 2.52" (64mm)<br>Black Aluminum |                    |       |              |
|   | <b>Part Number</b> | CQ    | CQM          |
| <b>Applicable Models</b>                                    | UCSQO              | UCSQM | ACSNO, ACSNK |

- 1. Extra cost for engraving, 3/16" min. letter height, Legends maximum ten characters.
- 2. Blank nameplates are supplied with all cam switches (they need not be ordered separately).

Wiring Clips

| Part Number | Contact Block Jumpers |
|-------------|-----------------------|
| CJ-1<br>    | Between decks         |
| CJ-2<br>    | Same deck             |

Replacement Keys

|                    |                     |
|--------------------|---------------------|
| <b>Part Number</b> |                     |
| K301<br>           | Pair of keys (#301) |

Switches & Pilot Lights

Display Lights

Relays & Sockets

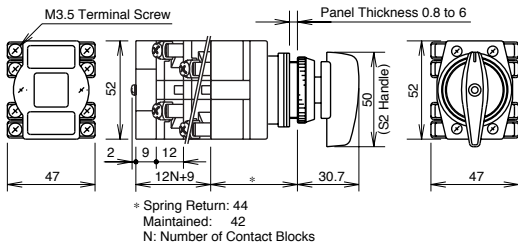
Timers

Terminal Blocks

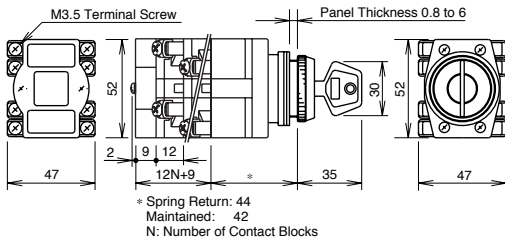
Circuit Breakers

**Dimensions/Terminal Arrangements/Mounting Holes**

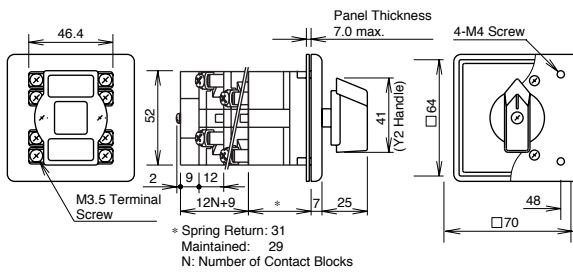
**ACSNO**



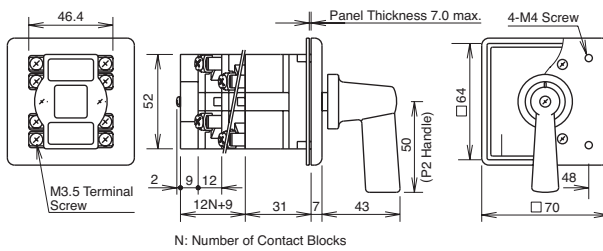
**ACSNK**



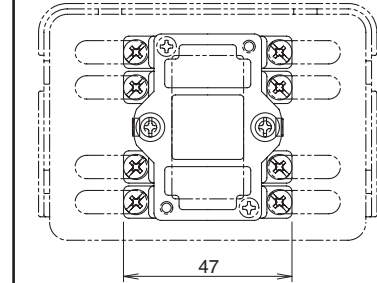
**UCSQO**



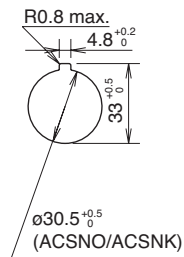
**UCSQM**



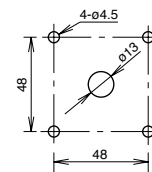
**Terminal Arrangement**



**Mounting Holes**



**UCSQO  
UCSQM**



Switches & Pilot Lights

Display Lights

Relays & Sockets

Timers

Terminal Blocks

Circuit Breakers